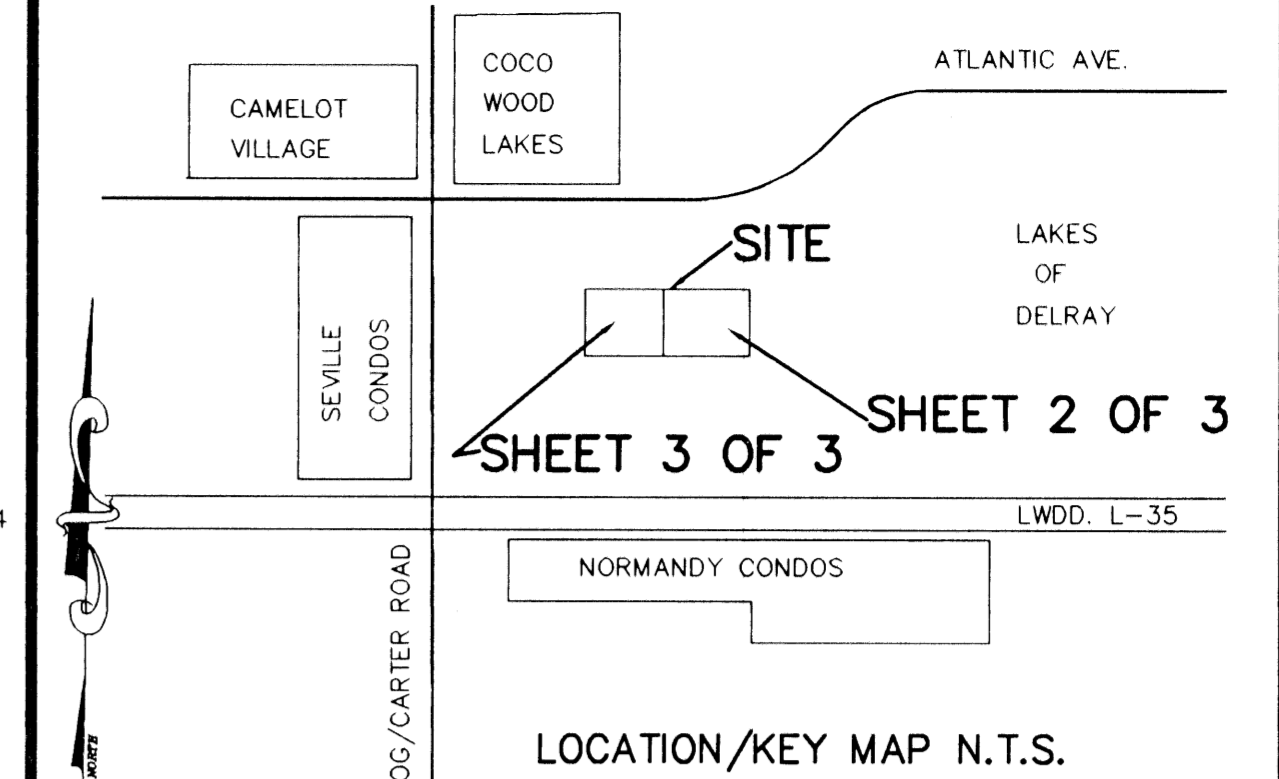


FLORAL LAKES PHASES THREE AND FOUR

A PLANNED UNIT DEVELOPMENT
 A PORTION OF THE NORTHEAST
 ONE-QUARTER OF SECTION 22, TOWNSHIP 48 SOUTH, RANGE 42 EAST,
 PALM BEACH COUNTY, FLORIDA

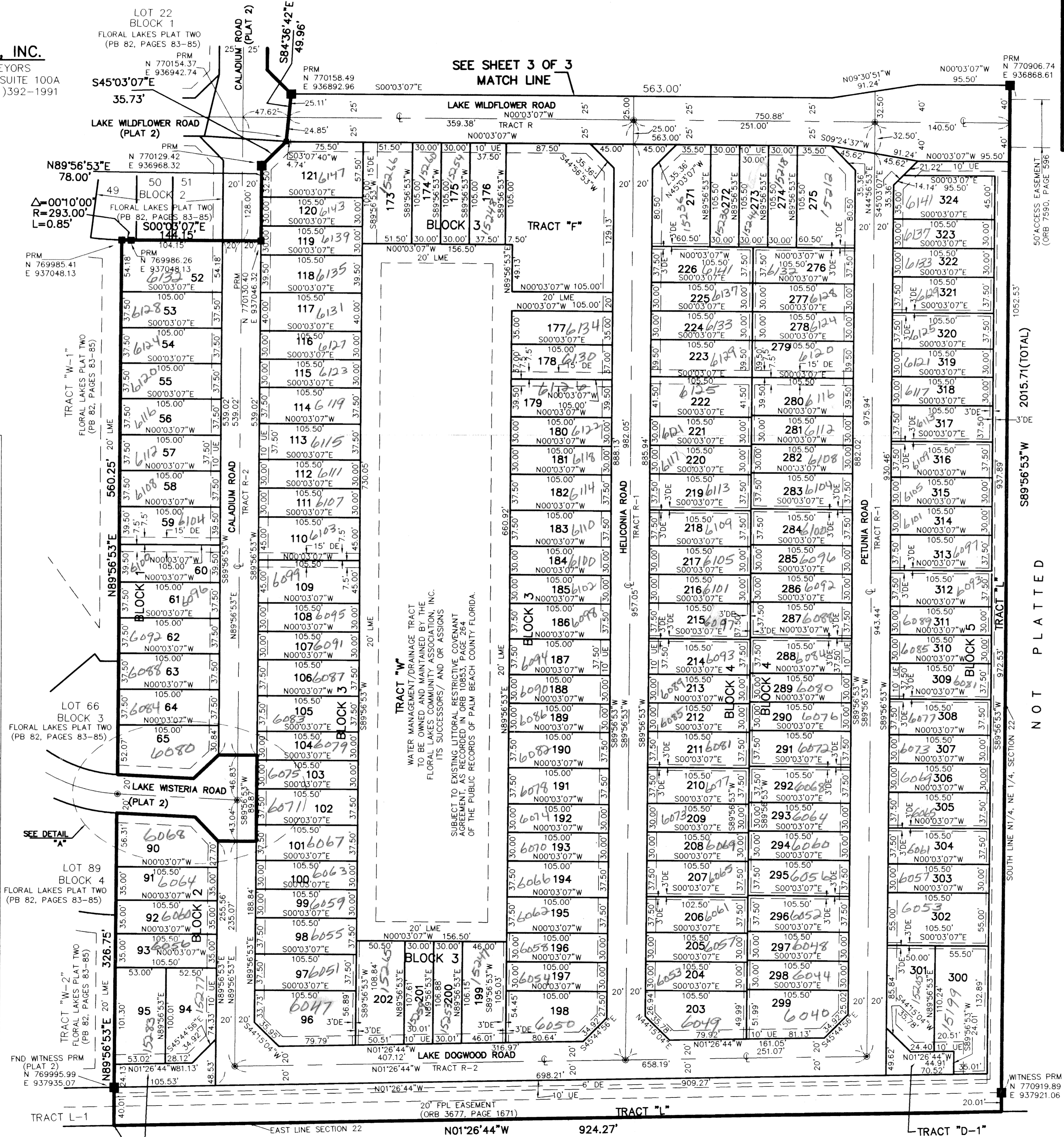
PREPARED BY
 DAVID P. LINDLEY
 OF
CAULFIELD and WHEELER, INC.
 ENGINEERS - PLANNERS - SURVEYORS
 7301-A WEST PALMETTO PARK ROAD, SUITE 100A
 BOCA RATON, FLORIDA 33433 - (561)392-1991
 JUNE - 1998

0615-007



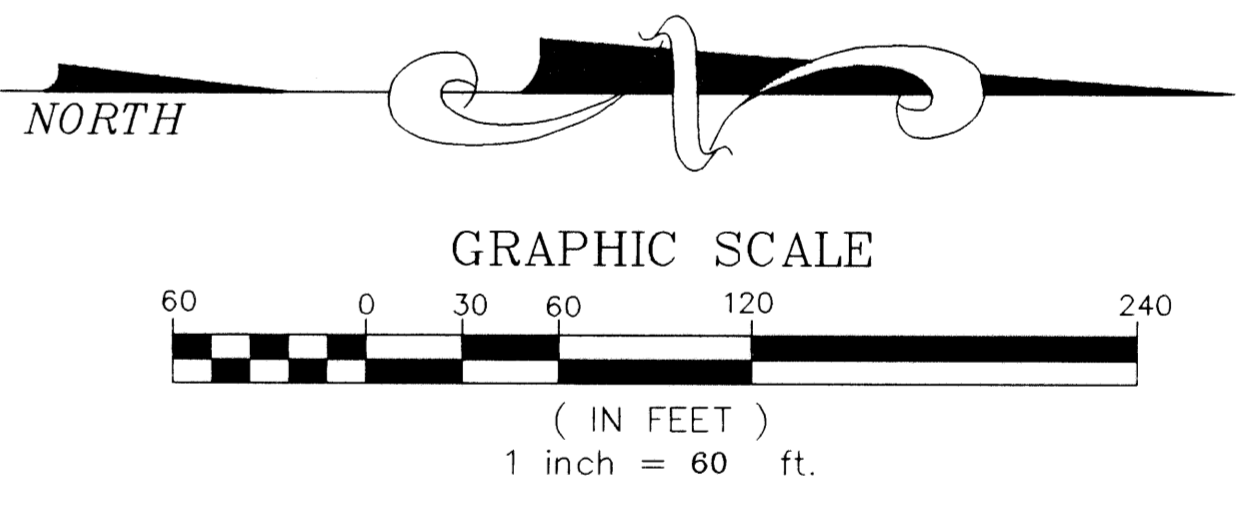
STATE OF FLORIDA
 COUNTY OF PALM BEACH
 THIS PLAT WAS FILED FOR
 RECORD AT _____ M.
 THIS _____ DAY OF _____
 A.D. 1999 AND DULY RECORDED
 IN PLAT BOOK _____ ON
 PAGES _____ AND _____
 DOROTHY H. WILKEN
 CLERK CIRCUIT COURT
 BY: _____
 DEPUTY CLERK

SHEET 2 OF 3



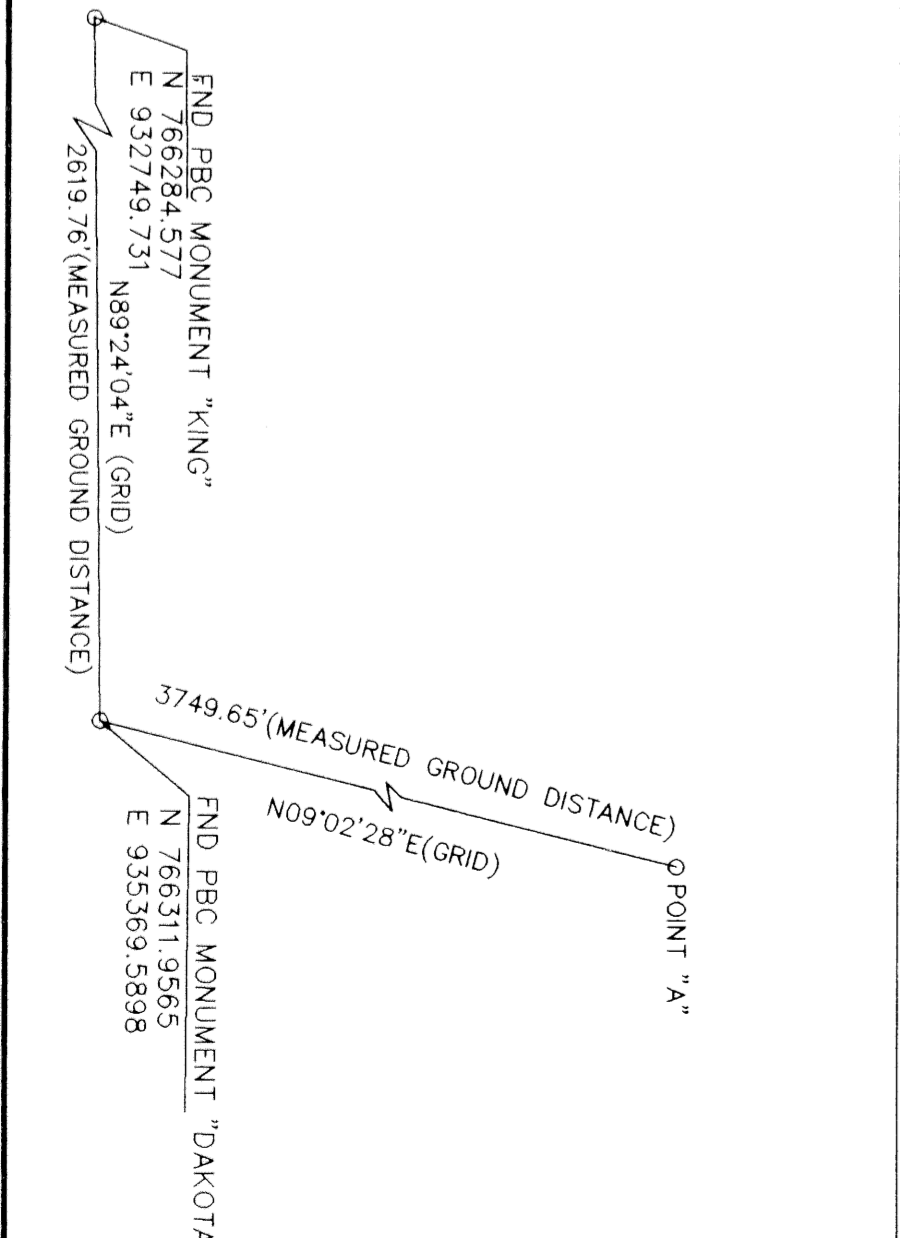
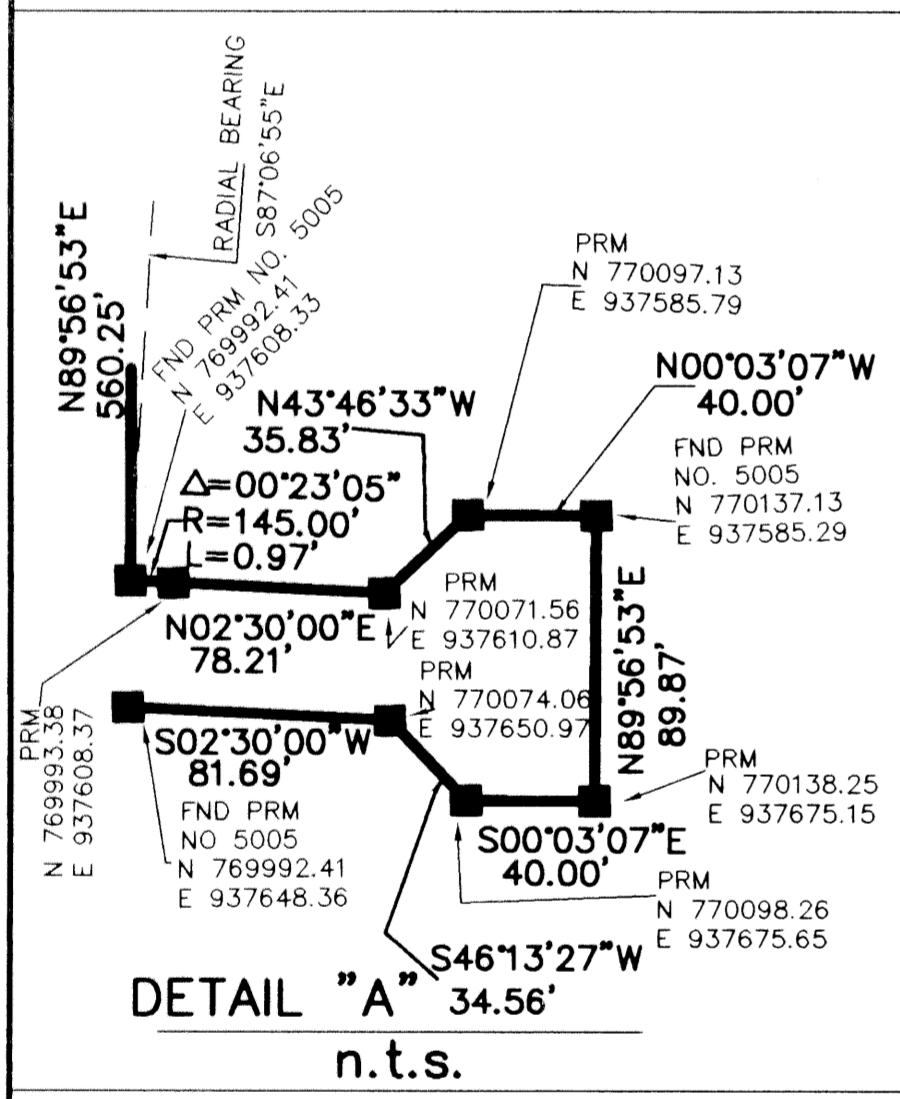
NOTES COORDINATES, BEARINGS AND DISTANCES

COORDINATES SHOWN ARE GRID
 DATUM = NAD 83 1990 ADJUSTMENT
 ZONE = FLORIDA EAST
 LINEAR UNIT = US SURVEY FEET
 COORDINATE SYSTEM 1983 STATE PLANE
 TRANSVERSE MERCATOR PROJECTION
 ALL DISTANCES ARE GROUND
 SCALE FACTOR = 1.0000313
 GROUND DISTANCE X SCALE FACTOR = GRID DISTANCE
 S89°58'53"W (PLAT BEARING) 00°39'50" = BEARING ROTATION
 S89°19'03"W (GRID BEARING) (PLAT TO GRID)
 NORTH LINE THIS PLAT COUNTER CLOCKWISE



TABULAR DATA

TOTAL AREA THIS PLAT	39,252 ACRES
AREA OF RESIDENTIAL	25,779 ACRES
AREA OF PRIVATE ROADWAY (TRACTS R-1, R-2, R-3, D-1, D-2, D-3)	6,520 ACRES
AREA OF WATER MANAGEMENT (TRACTS W AND W-1)	4,711 ACRES
AREA OF OPEN SPACE (TRACTS L AND L-1)	1,860 ACRES
AREA OF RECREATION (TRACT F)	0,382 ACRES
TOTAL NUMBER OF UNITS PROPOSED THIS PLAT	296
DENSITY PROPOSED THIS PLAT	7.54 UNITS/ACRE
LAND USE - MULTI-FAMILY	ZONING PETITION NO. PDD 91-40



Subdivision: Floral Lakes
 Book: 84
 Flood Zone: 6
 Quad: 37
 SE: 91-40
 TAZ: 971
 PUD Name: Floral Lakes

STATE PLANE TIE
 DETAIL n.t.s.

POINT OF BEGINNING
 NE CORNER TRACT "L-1"
 (PLAT 2)

LAKES OF DELRAY
 (PLAT BOOK 42, PAGES 66, 67)

WITNESS PRM
 N 770919.89
 E 937921.06